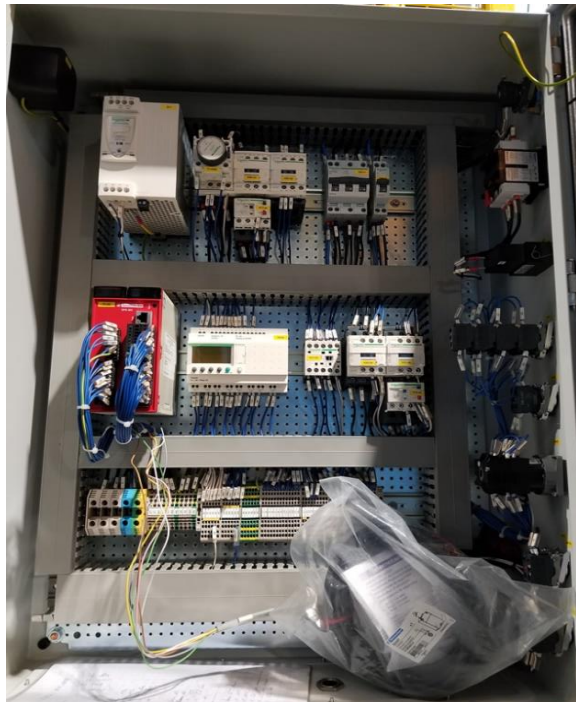


KNUCKLE JOINT PRESS RASKIN 400 TG

TECHNICAL DATA

TYPE	400 TG	
SERIAL NUMBER	400.G.016	
CAPACITY	400T	
RAM STROKE	70 mm	
STROKING RATE	40 s.p.m	
MINIMUM DISTANCE TABLE / RAM	350 mm	
RAM ADJUSTMENT	12 mm	
MOVABLE TABLE DEPTH	90 mm	
TABLE (left to right x back to front)	430 x 750 mm	
DISTANCE BETWEEN UPRIGHTS	450 mm	
RAM (left to right x back to front)	315 x 450 mm	
HOLE IN RAM	Ø 50 mm	
MOTOR POWER	9,5 HP	
MOTOR SPEED	1500 rd/mn	
DIMENSION	WIDTH	1900 mm
	DEPTH	1880 mm
	HEIGHT	3500 mm
WEIGHT OF PRESS	12,8T	



F539

