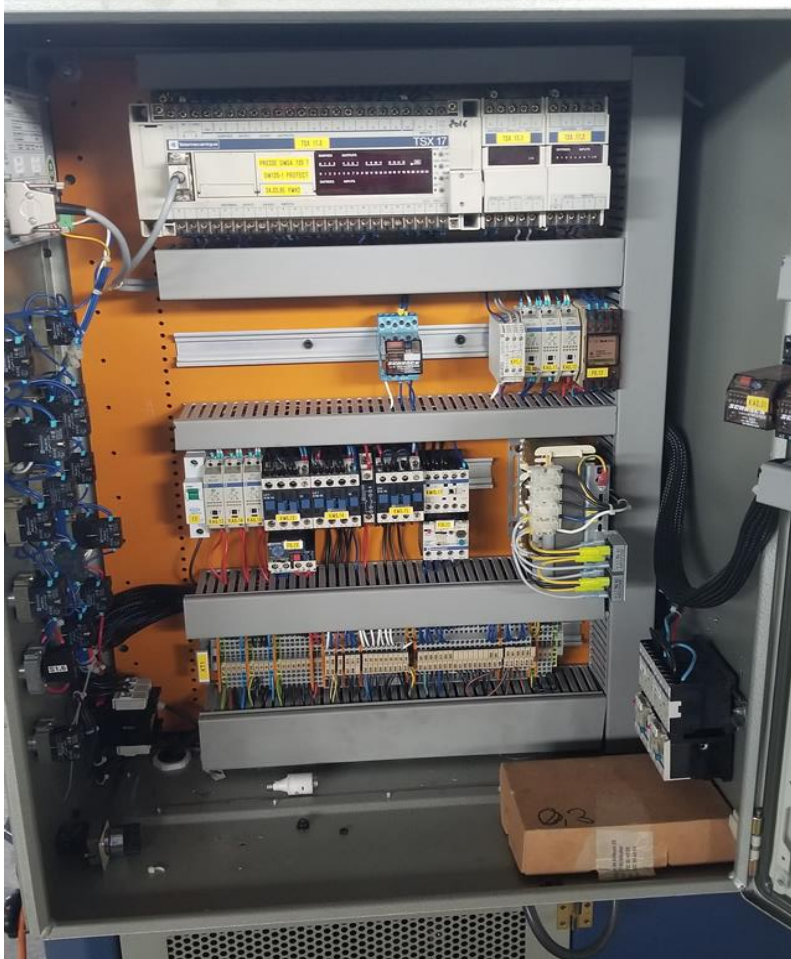


**HYDRAULIC PRESS
120T DMSA**

TECHNICAL DATA

| | |
|---------------------------------------|-----------------|
| CAPACITY | 120T |
| MAXIMUM WORKING PRESSURE | 380 bar |
| STROKE | 100 mm |
| TABLE AREA (Ø L to R x Back to Front) | 430x340mm |
| DISTANCE BETWEEN UPRIGHTS | 410 mm |
| DISTANCE TABLE / RAM (maximum) | 290 mm |
| TANK CAPACITY | 150L |
| APPROACH SPEED | 300 mm/s |
| SLOW APPROACH RATE | 4,45 mm/s |
| RETURN SPEED | 300 mm/s |
| MOTOR | 7,5 Kw |
| EJECTION MAXIMUM FORCE | 4T |
| ADJUSTABLE EJECTION STROKE | 15 mm |
| DIMENSION | WIDTH: 1300 mm |
| | DEPTH: 1250 mm |
| | HEIGHT: 2390 mm |
| WEIGHT OF PRESS | 1,9T |



F541

WWW.LORFORGE.FR

