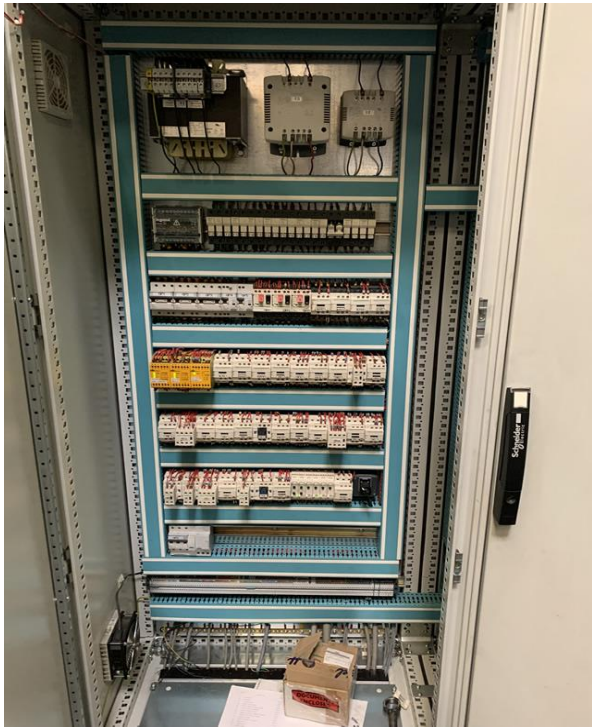


H-FRAME PRESS BRET PA63/230

TECHNICAL DATA

CAPACITY	630T
STROKE	160 mm
MOTORIZED RAM ADJUSTMENT	150 mm
SHUT HEIGHT	650 mm
VARIABLE STROKING RATE	25-70 s.p.m
DISTANCE BETWEEN UPRIGHTS	2300 mm
USABLE DIMENSIONS TABLE & RAM	2000x1000mm
LATERAL WINDOWS WIDTH	800 mm
MOVABLE TABLE THICKNESS	190 mm
MOTOR	45 Kw
DIMENSION	WIDTH:
	DEPTH:
	HEIGHT ABOVE THE GROUND:
WEIGHT	68T



WWW.LORFORGE.FR

F564